



complianceLab

Prof. Elena Grasselli: responsabile del ComplianceLab

Laurea in S. Biologiche-Biochimica

Dottorato in S. Tecnologie Biofisiche

Post-doc in Microbiologia e Biologia Molecolare

Specializzazione in Patologia Umana

Professore associato in Fisiologia

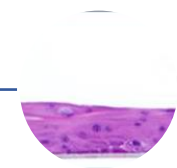


ToxTool 1.0

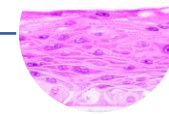
Online Toxicological Database

VALIDAZIONE

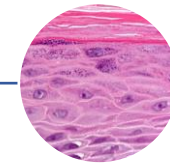
- Dottorato di ricerca
- Presentazioni a congressi internazionali
- Pubblicazioni scientifiche



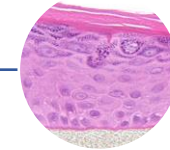
Cornea



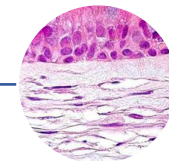
Mucosa orale



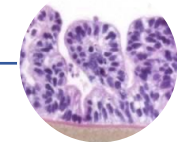
Tessuto gengivale



Tessuto cutaneo

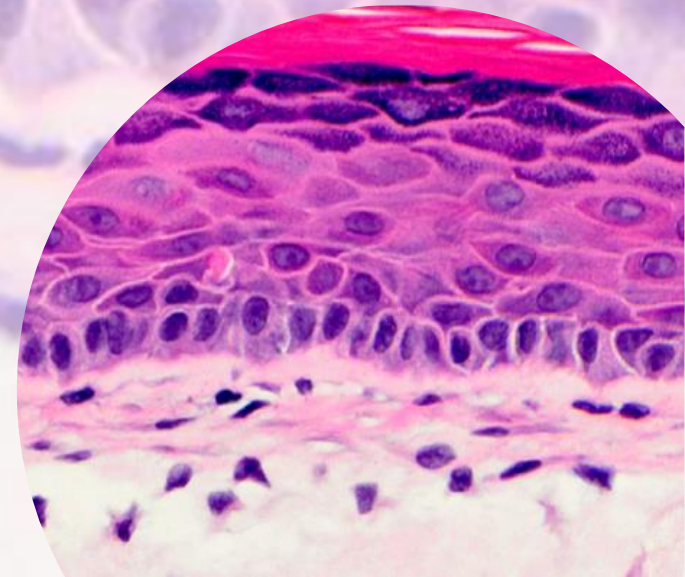
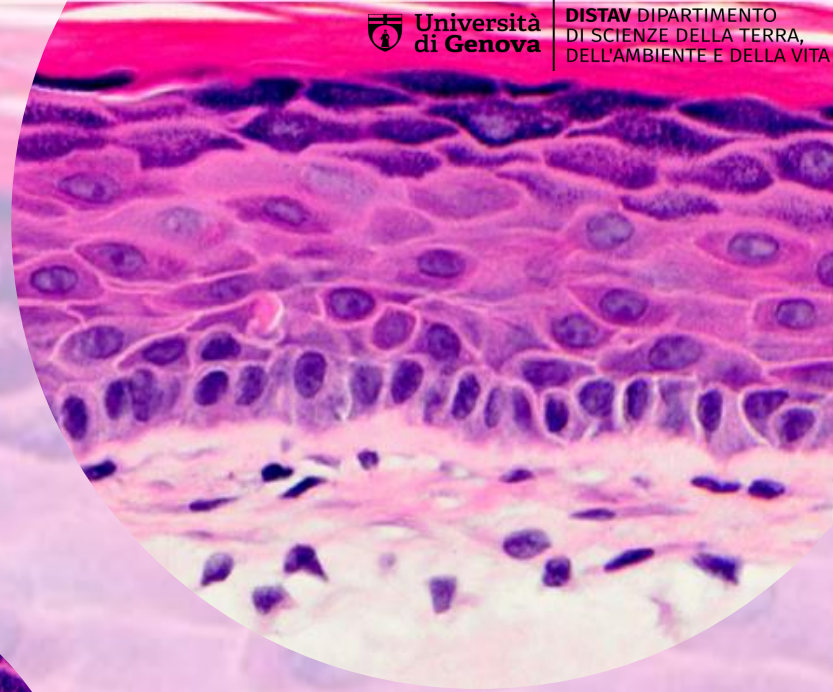
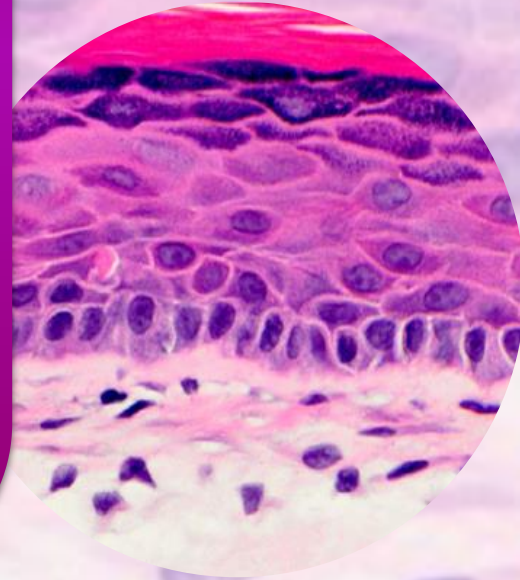
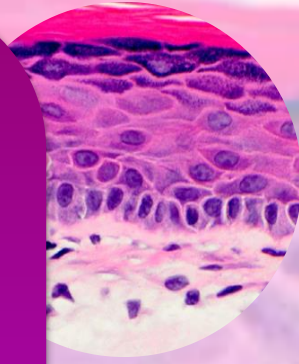


Mucosa polmonare



Mucosa intestinale

1. Anti-età
2. Rimarginazione della ferita
3. Idratazione cutanea
4. Protezione dai raggi UV
5. Corrosione cutanea
6. Penetrazione cutanea
7. Fototossicità
8. Prodotti Sbiancanti
9. Studi di pigmentazione
10. Screening di molecole anti-psoriasi



Test in vitro su sistemi 2D

1. Cheratinociti umani (HaCaT)
2. Endotelioцитi umani (HECV)
3. Cellule immunitarie murine (macrofagi-raw 264.7)
4. Fibroblasti epidermici umani (CCD-1070Sk)
5. Cellule di carcinoma mammario umano (MCF7)
6. Cellule di Epatoma di ratto (FaO)

ANTIOSSIDANTE
Protezione dall'insulto
ossidativo

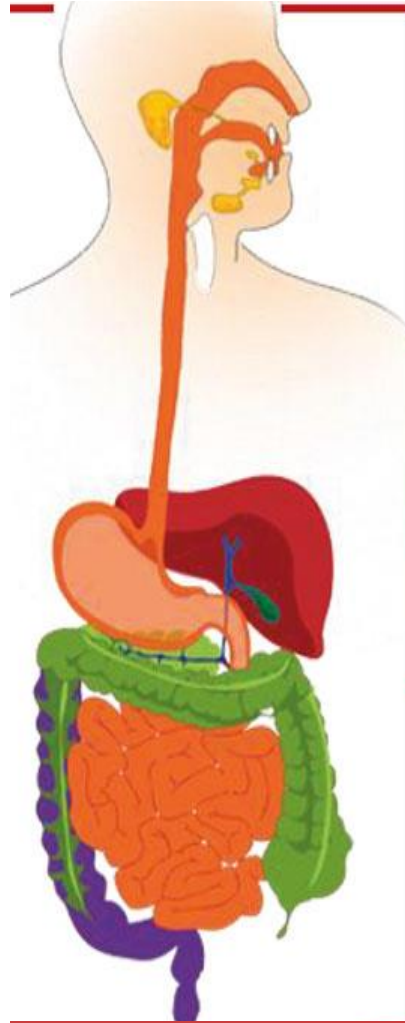
ACTIVE PRINCIPLES



Composti derivati dai vegetali

Polifenoli naturali e di sintesi

Preliminary assessment of the leach of Al^{3+} in the different phases of the passage through the digestive tract



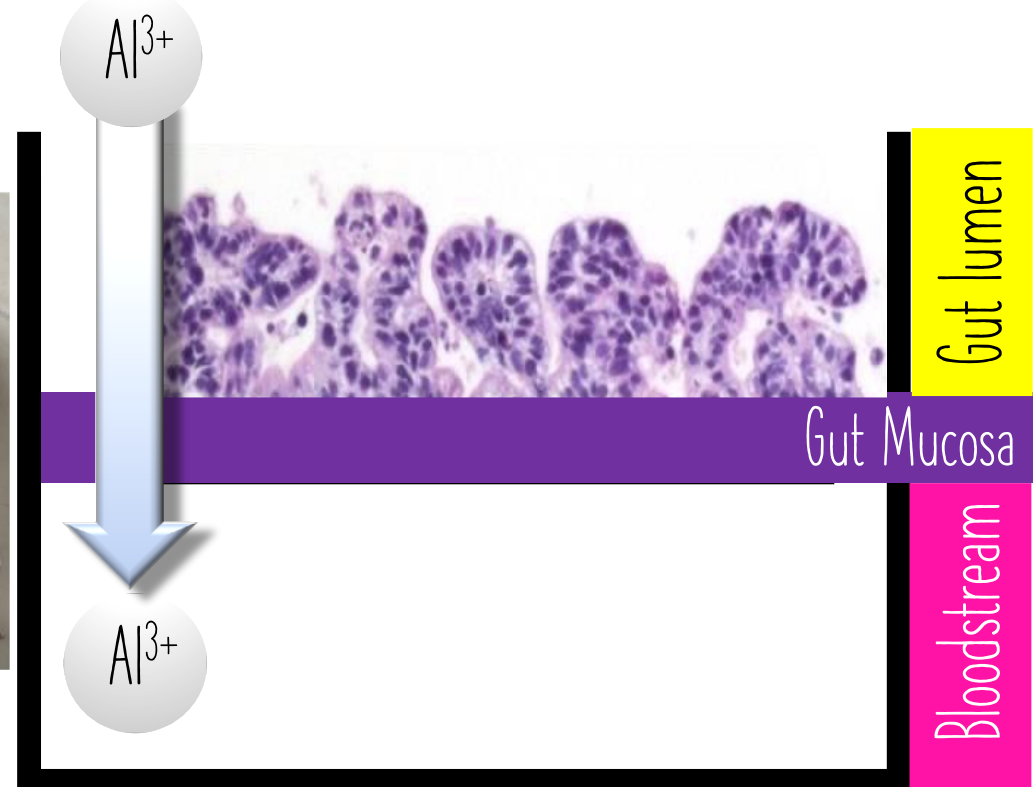
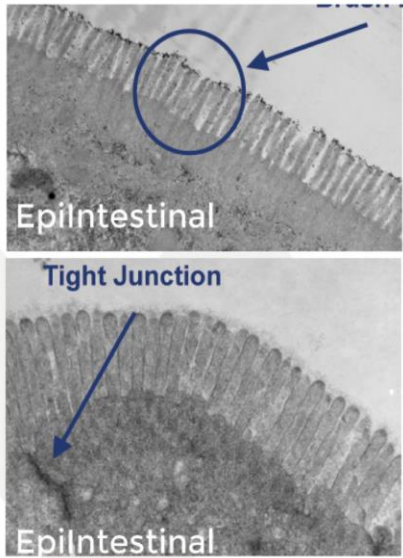
Phase	Duration	Temperature	pH
Oral phase	• 2 min	• 37°C	• pH 7.0
Gastric phase	• 2 h	• 37°C	• pH 3.0
Intestinal phase	• 2h	• 37°C	• pH 7.0



Evaluation of the passage of aluminum throughout the intestinal mucosa



Epintestinal



SOSTENIBILITA'



Ongoing Projects:

EcoeFISHent, H2020: UniGe DISTAV–Food and Skin Physiology Lab DIFAR–Food Chemistry Lab

Biodegradable organic materials for the development of intelligent packaging; POR FESR

Bioactive compounds efficacy and safety for cosmetic and nutraceutical application;

Bioavailability of aluminium

Monitoring of SARS COV-2 IN WASTEWATERS, Regione Liguria and ARPAL

Chytridiomycosis in amphibians, Tender EU

FOOD and SKIN Physiology Lab

